



Ministry of Health and Social Services
Republic of Namibia

NAMIBIA COVID-19 SITUATION REPORT NO.33			
Outbreak Name	COVID-19	Country affected	Namibia
Date & Time of report	20 April 2020 20:00	Investigation start date	13 March 2020
Prepared by	Surveillance Team		

Date of outbreak declaration in Namibia: 14 March 2020.

1. SITUATION UPDATE / HIGHLIGHTS

- No new confirmed case was reported in the last 15 days (5 – 20 April 2020).
- Cumulatively, 16 confirmed cases have been reported in the country, to date.
- Six (6) confirmed cases have recovered and discharged, to date
- Supervised quarantine for all Namibians arriving from abroad for 14 days is ongoing.
- The lockdown has been extended until 4 May for entire country, as announced on 14 April 2020 by His Excellency, the President of the Republic of Namibia
 - All borders will remain closed except for essential/critical services and humanitarian support to the response.
 - All other prevention measures are applicable to the entire country

2. BACKGROUND

Description of the cases

- **Index cases:** Two confirmed cases of COVID-19 were reported in Windhoek district on 13 March 2020. The married couple; a 35-year-old male and a 25-year-old female, arrived from Madrid, Spain on 11 March 2020.
- Total number of imported cases currently stands at 13 and 3 cases local transmission.
- There is no evidence of community transmission in the country at the moment.

Table 1: Confirmed cases by region as of 20 April 2020

Reporting region	Total Cases	New cases	Active cases	Recovered	Death
Khomas	11	0	5	6	0
//Karas	1	0	1	0	0
Erongo	4	0	4	0	0
Total	16	0	10	6	0

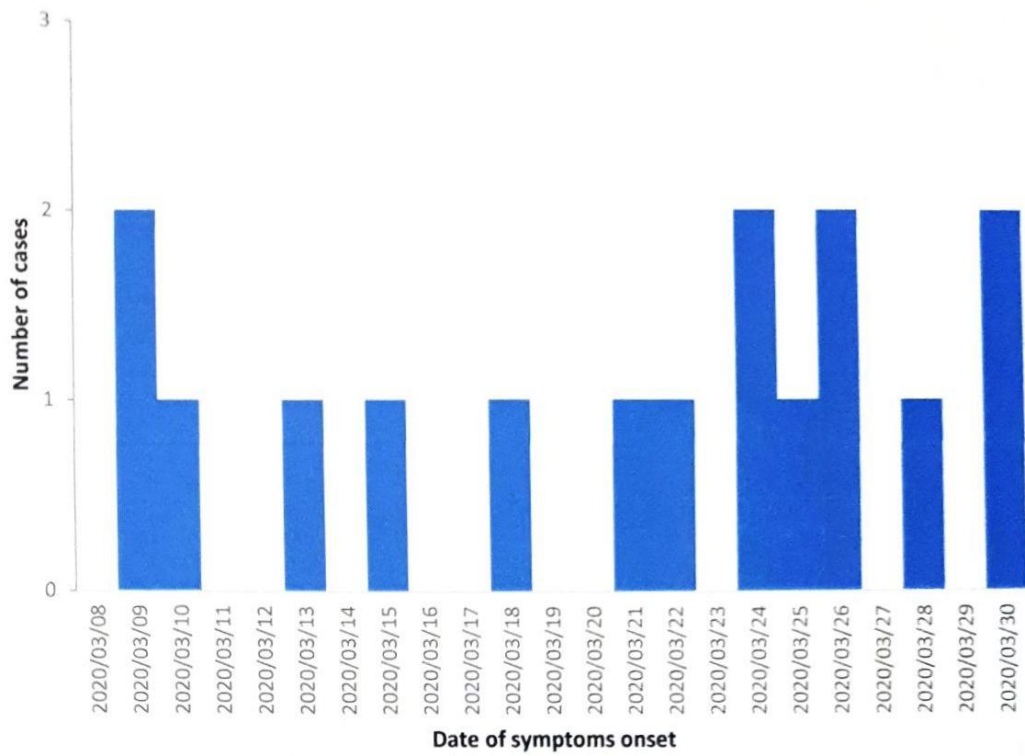


Figure 1: Epi-curve for COVID-19 confirmed cases in Namibia as of 20 April 2020

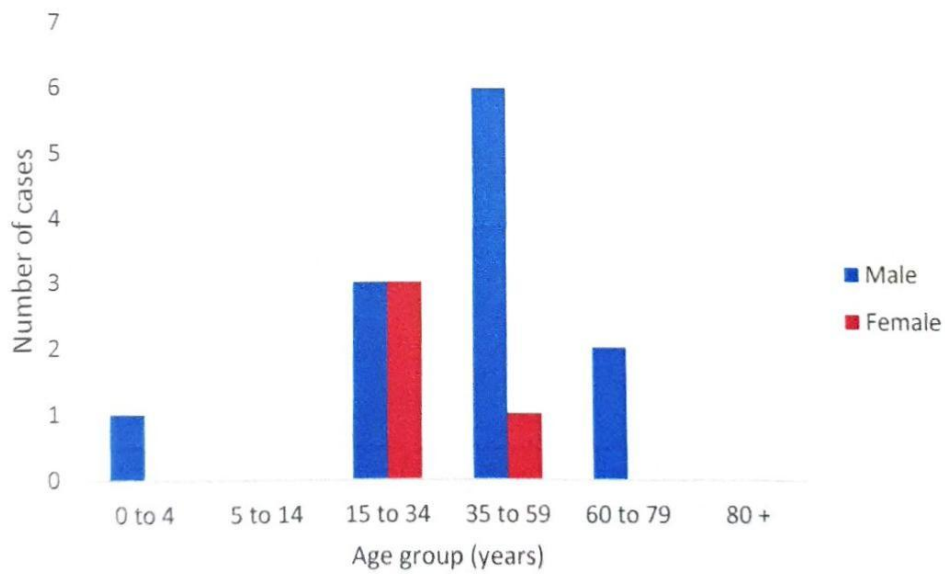


Figure 2: Age and sex for COVID-19 confirmed cases in Namibia as of 20 April 2020

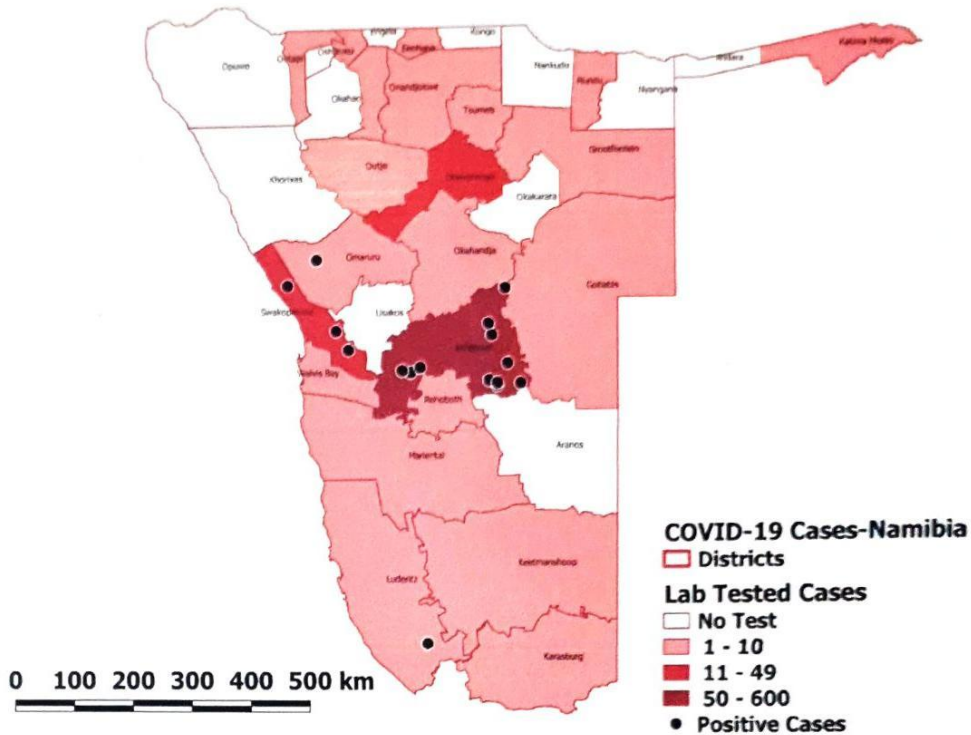


Figure 3: Suspected and confirmed COVID-19 cases in Namibia per District, 20 April 2020

3. PUBLIC HEALTH ACTION / RESPONSE INTERVENTIONS EPIDEMIOLOGY & SURVEILLANCE

- **Case definitions as of 20 March 2020:**

Suspect case:

A. A patient with acute respiratory illness (fever and at least one sign/symptom of respiratory disease, e.g., cough, shortness of breath), AND a history of travel to or residence in a location reporting community transmission of COVID-19 disease during the 14 days prior to symptom onset;

OR

B. A patient with any acute respiratory illness AND having been in contact with a confirmed or probable COVID-19 case in the last 14 days prior to symptom onset;

OR

C. A patient with severe acute respiratory illness (fever and at least one sign/symptom of respiratory disease, e.g., cough, shortness of breath; AND requiring hospitalization) AND in the absence of an alternative diagnosis that fully explains the clinical presentation.

Probable case: A suspect case for whom testing for COVID-19 is inconclusive. Inconclusive being the result of the test reported by the laboratory

Confirmed case: A person with laboratory confirmation of COVID-19 infection, irrespective of clinical signs and symptoms.

Active surveillance working case definition as of 20 April 2020

A patient diagnosed with Upper/Lower Respiratory Infection (Mild or Severe) presenting any of the following signs and symptoms: cough, sore throat, fever, chills, myalgia/body pains or shortness of breath in the past 7 days.

- **Surveillance activities**
 - Daily pillar and intra-pillar discussions are held to deliberate daily progress, gaps and way forward;
 - Call centre continue operations for 24 hours per day.
 - Data entry is ongoing and real data dashboard is completed to be launched soon.
 - Active case finding is currently underway in Khomas, Erongo and Karas regions, aimed to look for possible community transmission and, is planned to be rolled out to all the other regions for expanded testing.
 - Contact tracing is ongoing (see table 2) and all contacts will be tested
 - People under mandatory quarantine are being monitored daily (see table 3) and will be tested before release after 14 days

Contact tracing Summary

Table 2: National contacts tracing summary as of 20.04.2020

Variables	Contact risk level			
	High	Medium	Low	Total
Total Number of contacts listed (potential)	68	48	118	234
Total Number of contacts identified	68	48	102	218
Total Number of active contacts (being followed)	4	2	2	8
Number of contacts monitored/followed in the last 24hrs	4	2	2	8
Total number of Contacts completed 14-days follow up	61	43	95	199
Total Number of contacts that developed signs & symptoms	25	7	7	39
Total Number of contacts tested positive	3	1	0	4
*Total Number of contacts tested without signs and symptoms	17	1	8	26
© Total Number of contacts lost to follow up	0	2	5	7
Total number of Contacts never reached	0	0	16	16

*Number of contacts without signs & symptoms tested. One tested positive.

© Seven contacts are lost to follow up, all are non-Namibians and have travelled back to their countries.

Table 3: Number of people in mandatory quarantine facility as of 20.04.2020

Region	Newly quarantined 24hrs	Cumulative number of people	Number of people in quarantine now	Number of people discharged
Ohangwena	3	21	17	4
Hardap	0	40	0	40
Otjozondjupa	0	100	39	61
Khomas	0	150	20	130
Zambezi	0	103	29	74
//Karas	0	26	12	14
Total	3	440	117	323

LABORATORY INVESTIGATIONS

- As of 20 April 2020, a total of 546 COVID-19 specimens were tested in the two laboratories (NIP and Path Care) as per table below:

Table 4: COVID-19 specimens recorded at NIP and Path care Laboratories as of 20.04.2020

As of 20/04/2020	Laboratory			Total
	NIP	Path care	South Africa	
Total sample received by the Laboratory	459	185	-	644
Total sample tested	363	183	-	546
Total results received	363	183	-	546
Total sample re-tested	65	0	-	65
Total results positive	9	6	*1	16
Total results negative	354	177	-	531
Total sample discarded	30	2	-	32
Total results pending	1	0	-	1
Total results inconclusive/indeterminate	0	0	-	0
@Total new suspected cases in last 24 hours	20	0	-	20

*1 Patient specimen collected and tested in South Africa, he travelled back before results came out

@ Total new suspected cases laboratory results received within 24 hours

COORDINATION AND LEADERSHIP:

- Daily feedback meetings between pillar leads, coordination team and Incident manager ongoing, to share daily accomplishments and to address key challenges
- Efforts to increase isolation and quarantine facilities are ongoing.
- Finalizing needs assessment and integrated capacity training plans for the responders at National and regional levels.
- Plans to complete the Organogram, SOPs, TORs, Contingency Response Plan and sentinel surveillance protocol by Wednesday, 22 April 2020 and submit these for clearance to senior management.

CASE MANAGEMENT

- Out of the 16 cumulative confirmed cases, 6 recovered, and have been discharged, after testing negative for COVID-19 at 48 hours interval.
- The other 10 confirmed cases are in stable condition and all are asymptomatic.
- Conversion of casualty department at Windhoek Central Hospital (WCH) into a highly infectious referral ICU to be completed on 22 April 2020.
- A 12-bed Isolation Unit has been constructed at WCH, furnishing and equipping of the facility to be finalized on 20 April 2020.
- Rhino Garments' building renovation to be repurposed as an isolation facility.
 - The memorandum of understanding between MoHSS and private hospitals are being prepared on the renovation and operation of the facility.
- Katutura State Hospital (KSH) TB ward being re-purposed into a COVID-19 ward.
- Four Private hospitals in Windhoek (Mediclinic, Lady Pohamba, Rhino Park, and Roman Catholic private hospital) have been designated as the private hospitals for the response of COVID-19 with a combined total of 8 ICU beds and 32 beds for moderate to severe cases.
 - COVID-19 patients with health insurance cover are eligible to access care in any of the 4 designated facilities
- Training of Health care workers (from wards and from private facilities) on case management and IPC is conducted daily at WCH, KSH, and Robert Mugabe Clinic.
- Bi-weekly ZOOM training sessions for Health Care Workers is ongoing.

LOGISTICS:

- Facilitation of the allocation of quarantine facilities in the country and transport for discharged people from quarantine facilities is ongoing.
- Provision of commodities' specifications and verification for procurement is being done regularly
- Three hundred and thirty-one (331) personnel appointed since 13 March 2020.
- Appointment letters signed for additional personnel to come on board to assist in the response are as follow; 258 community health workers, 6 emergency care practitioners, 38 enrolled nurses, and 5 medical officers.

RISK COMMUNICATION AND COMMUNITY ENGAGEMENT:

- The communication hub continues to give updates on COVID-19 and also clarify miscommunications on a daily basis this is done concurrently with the social media updates.
- The RCCE team worked with the City of Windhoek to develop messages for traders and customers at the open markets .
- The traders have to be trained before they start to operate.
- The Media continue to communicate messages on COVID-19 and the extension of the lockdown.
- The RCCE continues to share messages on Covid-19 prevention measures

PSYCHOSOCIAL SUPPORT SERVICES:

- Health education, psychosocial support and post counselling services to people under quarantine, COVID-19 confirmed cases and their families are ongoing
- Daily orientation of regional social workers on their role in the COVID-19 response continues in order to guide them in activities to be conducted.
- A total of 401 persons in need of shelter housed at two sites
- Health education, psychosocial support services provided, as well as food and other material distributed at places where persons in need of shelter are placed is ongoing.
- MTC continue to provide lunch for the persons without shelter at the two sites in Windhoek
- Total of 160 persons in need of shelter still to be placed, due to the fact that they refused to be moved. Consultation with City of Windhoek is ongoing.
- Assessment of persons in need of shelter commenced on 16 April and will continue until 20 April 2020. A total of 159 needs assessment forms were completed by 19 April 2020.
- Conducted and ongoing consultative meetings with the Regional Governor and CEO of the City of Windhoek on the planning for services to persons in need for shelter after the COVID-19 outbreak.
- Five telephonic and 19 face to face counselling sessions were conducted.

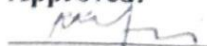
4. CHALLENGES

- Inadequate and at some places lack of isolation units at health facilities and at points of entry in the regions.
- The COVID-19 response team inadequately staffed
- Unavailability of probes and primers for NIP laboratory to start testing for Seasonal Influenza (H1N1) from beginning May 2020.
- Inadequate swabs for Covid-19


5. RECOMMENDATIONS

- Establish fully equipped isolation units at health facilities and at points of entry in the regions.
- Fast track procurement process laboratory testing kits (probes and primers) for Seasonal Influenza (H1N1) testing in the two selected sentinel sites (Katutura Hospital and Robert Mugabe clinic). The sites can be extended later.
- Finalise integrated training capacity package (addressing all pillars) and conduct training in all the regions
- Conduct a need assessment to identify the readiness of all regions in terms of equipped isolation facilities, IPC, PPEs and adequate response task force.

Approved:


Incident Manager

Date: 20.04.2020


Secretariat